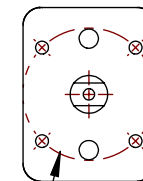


TOP FLANGE



ISO 5211-F07

NOTES:

1. CERTIFIED TO MEET THE REQUIREMENTS OF: NSF/ANSI 61 AND NSF/ANSI 372.
2. A536 GRADE 65-45-12 DUCTILE IRON BODY.
3. PRESSURE: 600 PSI CWP.
4. TEMPERATURE: 366°F.
5. WEIGHT: 16 LBS.



4940 Peachtree Industrial Blvd, #390
Berkeley Lake, GA 30071, USA
Ph: 800 645 0101

This file and any associated information and specifications are provided for reference and evaluation purposes only, and is subject to change without notice. AMERICAN VALVE makes no representations, warranties or guarantees as to the appropriateness, accuracy, completeness, or suitability for any purpose, of the file, information or specifications. You are solely responsible for the use of the file, information or specifications.

IG-4000DV-020

4000DV 2" Ductile Iron Grooved-End
Full Port Ball Valve 600CWP
with Gear Operator

SCALE	NTS
UNIT	INCH
SHEET	1 of 1